



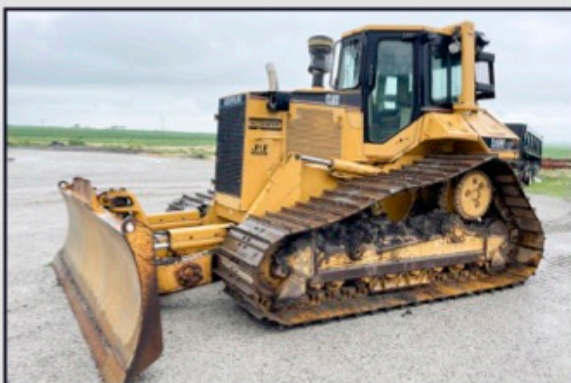
TIMED ONLINE | NO-RESERVE EQUIPMENT AUCTION

BIDDING CLOSES:
THURSDAY, AUGUST 04, 2022
STARTING AT 10:00 AM CENTRAL

EQUIPMENT LOCATION
32169 E 835 N, CHATSWORTH, IL 60921

J&J MACHINES

Equipment Questions: Jed Diller (815) 674-0121



CONSTRUCTION EQUIPMENT

- Cat D6M dozer, EROPS, PS trans., 13' 6-way straight blade, 34" pads, rear hitch, rear window guard, 7,313 hours, SN 4JN01465
- Hyundai Robex 160LC-7 excavator, EROPS, 24" pads, 36" bucket w/teeth, mechanical thumb, 2,390 hours, SN N05110547
- 2007 Bobcat 331 mini-excavator, EROPS, 2-speed, 12" rubber tracks, 22" bucket w/teeth, hyd. backfill blade, 2,544 hours, SN 2343173
- Cat 4' pull-type sheepsfoot roller

TRAILERS

- 2011 Kaufman R30 39' step-deck flatbed trailer, folding ramps, spring ride, 12' top deck, 22' main deck, 5' dovetail, 17.5" steel wheels, VIN 5VGF3928BL000143
- 2000 Dynaweld 53' step-deck flatbed trailer, spring ride, 22.5" steel wheels, 11' top deck, 42' main deck, 96" wide, VIN 4U181DJR0Y1040037
- 1991 Trail-King TK20 24' deck-over flatbed trailer, pintle hitch, air brakes, spring ride, 16.5" steel wheels, 19' deck + 5' dovetail w/folding ramps, VIN 1TKC02429MM108015

FARM EQUIPMENT

- 1971 John Deere 4320 2wd tractor, Synchro trans., 1 hyd. outlet, side console, 540/1000 PTO, 18.4-34 rear tires, 11L-15 front tires, rear weights, 9,660 hours, SN 012831R - new starter
- John Deere 7000 6 row 30" planter, ground drive, spring downforce, insecticide, markers, monitor, SN 049480
- Behnke 1,000 gal. tender trailer, gas eng. w/pump, tandem axle, bumper hitch, used for water only
- New Holland 311 small square baler, twine tie, 540 PTO, SN 660401
- International 1190 9' mower conditioner, sickle cut, rubber conditioner rolls, hyd. tongue, 540 PTO, SN 107155
- New Idea 1 row pull-type corn picker, 540 PTO

SHOP TOOLS

- Vulcan OmniPro 220 multi-process welder, MIG/Stick/TIG/Flux-core capable, spool gun, rolling cart
- Bridgeport vertical milling machine, 3 phase
- Industrial surface grinder on workbench
- Crown B-67 electric pallet jack, 1,500 lbs capacity, 67" lift, 26" forks, new battery
- Energair upright air compressor, model 5B50E8UB, 5 hp. single phase elec. motor
- Merritt aluminum headache rack for semi

AUCTIONEERS' NOTE

Make plans to participate in this online equipment auction for J&J Machines. This will be a timed online auction. Please visit our website www.SullivanAuctioneers.com for detailed photos & internet bidding catalog. There is no buyer's premium. All items sell as-is. Not responsible for accidents, errors or omissions.

Auction Manager: Luke Sullivan (309) 371-5214



SULLIVAN
AUCTIONEERS, LLC

TF (844) 847-2161 | LICENSE #444000107