

Illinois
Stephenson

U.S. Department of Agriculture
Farm Service Agency

FARM: 959
Prepared: 7/11/22 8:19 AM
Crop Year: 2022

Report ID: FSA-156EZ

Abbreviated 156 Farm Record

Page: 1 of 2

DISCLAIMER: This is data extracted from the web farm database. Because of potential messaging failures in MIDAS, this data is not guaranteed to be an accurate and complete representation of data contained in the MIDAS system, which is the system of record for Farm Records.

Operator Name Farm Identifier
Not Applicable

Farms Associated with Operator:

ARC/PLC G/F Eligibility: Eligible

CRP Contract Number(s): None

Farmland	Cropland	DCP Cropland	WBP	WRP	EWP	CRP Cropland	GRP	Farm Status	Number of Tracts
189.13	178.07	178.07	0.0	0.0	0.0	0.0	0.0	Active	1
State Conservation	Other Conservation	Effective DCP Cropland	Double Cropped	MPL/FWP					
0.0	0.0	178.07	0.0	0.0					

ARC/PLC					
PLC	ARC-CO	ARC-IC	PLC-Default	ARC-CO-Default	ARC-IC-Default
WHEAT, CORN	SOYBN	NONE	NONE	NONE	NONE

Crop	Base Acreage	PLC Yield	CCC-505 CRP Reduction	HIP
WHEAT	4.51	65	0.00	
CORN	123.67	172	0.00	
SOYBEANS	42.72	55	0.00	0
Total Base Acres:	170.9			

Tract Number: 2932 Description P10 SEC 1 RIDOTT T26NR9E SEC6 SEWARD,WINN T26NR10E

FSA Physical Location : Stephenson, IL ANSI Physical Location: Stephenson, IL

BIA Range Unit Number:

HEL Status: HEL: conservation system is being actively applied

Wetland Status: Wetland determinations not complete

WL Violations: None

Farmland	Cropland	DCP Cropland	WBP	WRP	EWP	CRP Cropland	GRP
189.13	178.07	178.07	0.0	0.0	0.0	0.0	0.0
State Conservation	Other Conservation	Effective DCP Cropland	Double Cropped	MPL/FWP			
0.0	0.0	178.07	0.0	0.0			

Crop	Base Acreage	PLC Yield	CCC-505 CRP Reduction
WHEAT	4.51	65	0.00
CORN	123.67	172	0.00
SOYBEANS	42.72	55	0.00

Illinois
Stephenson

U.S. Department of Agriculture
Farm Service Agency

FARM: 959
Prepared: 7/11/22 8:19 AM
Crop Year: 2022
Page: 2 of 2

Report ID: FSA-156EZ

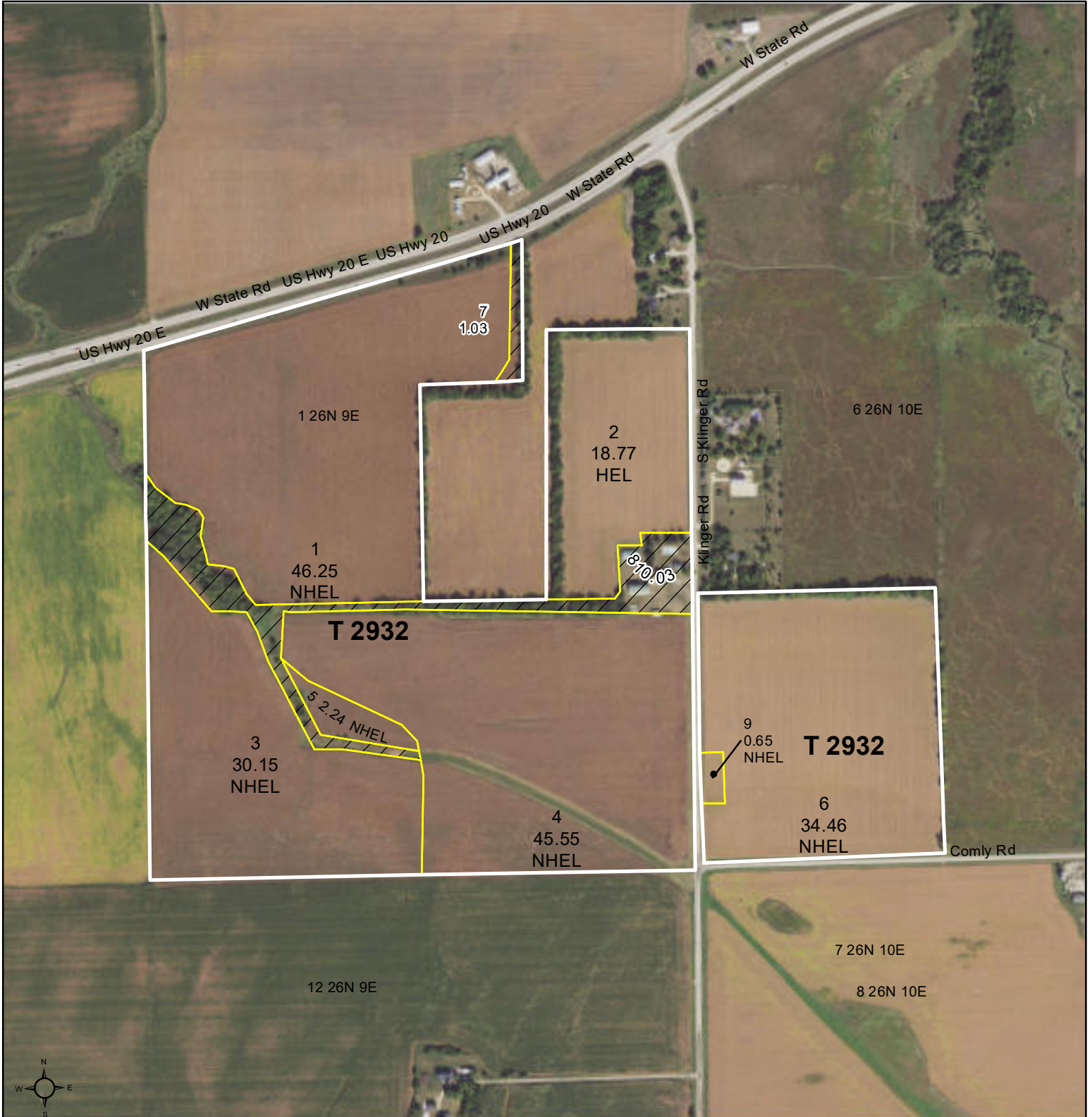
Abbreviated 156 Farm Record

DISCLAIMER: This is data extracted from the web farm database. Because of potential messaging failures in MIDAS, this data is not guaranteed to be an accurate and complete representation of data contained in the MIDAS system, which is the system of record for Farm Records.

Crop	Base Acreage	PLC Yield	CCC-505 CRP Reduction
Total Base Acres:	170.9		

Owners: CITIZENS STATE BANK LAND TRUST 40-051

Other Producers:

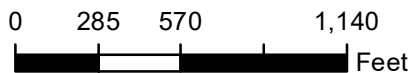


Common Land Unit

- Non-Cropland
- Cropland
- plss_a_il_WMAS
- CRP

Wetland Determination Identifiers

- Restricted Use
- Limited Restrictions
- Exempt from Conservation
- Compliance Provisions



2022 Program Year
Map Created December 13, 2021

Farm 959
Tract 2932

Tract Cropland Total: 178.07 acres

IL177_T2932

United States Department of Agriculture (USDA) Farm Service Agency (FSA) maps are for FSA Program administration only. This map does not represent a legal survey or reflect actual ownership; rather it depicts the information provided directly from the producer and/or National Agricultural Imagery Program (NAIP) imagery. The producer accepts the data 'as is' and assumes all risks associated with its use. USDA-FSA assumes no responsibility for actual or consequential damage incurred as a result of any user's reliance on this data outside FSA Programs. Wetland identifiers do not represent the size, shape, or specific determination of the area. Refer to your original determination (CPA-026 and attached maps) for exact boundaries and determinations or contact USDA Natural Resources Conservation Service (NRCS).

Illinois
Stephenson

U.S. Department of Agriculture
Farm Service Agency

FARM: 6645
Prepared: 7/11/22 8:20 AM
Crop Year: 2022

Report ID: FSA-156EZ

Abbreviated 156 Farm Record

Page: 1 of 2

DISCLAIMER: This is data extracted from the web farm database. Because of potential messaging failures in MIDAS, this data is not guaranteed to be an accurate and complete representation of data contained in the MIDAS system, which is the system of record for Farm Records.

Operator Name Farm Identifier
Not Applicable

Farms Associated with Operator:

ARC/PLC G/F Eligibility: Eligible

CRP Contract Number(s): None

Farmland	Cropland	DCP Cropland	WBP	WRP	EWP	CRP Cropland	GRP	Farm Status	Number of Tracts
98.82	98.82	98.82	0.0	0.0	0.0	0.0	0.0	Active	1
State Conservation	Other Conservation	Effective DCP Cropland	Double Cropped	MPL/FWP					
0.0	0.0	98.82	0.0	0.0					

ARC/PLC						
PLC	ARC-CO	ARC-IC	PLC-Default	ARC-CO-Default	ARC-IC-Default	
WHEAT, CORN , SOYBN	NONE	NONE	NONE	NONE	NONE	NONE

Crop	Base Acreage	PLC Yield	CCC-505 CRP Reduction	HIP
WHEAT	0.6	48	0.00	
CORN	93.5	170	0.00	
SOYBEANS	3.1	52	0.00	0
Total Base Acres:	97.2			

Tract Number: 5289 Description N5 SEC 21 T28N R9E ROCK RUN
 FSA Physical Location : Stephenson, IL ANSI Physical Location: Stephenson, IL
 BIA Range Unit Number:
 HEL Status: HEL: conservation system is being actively applied
 Wetland Status: Wetland determinations not complete
 WL Violations: None

Farmland	Cropland	DCP Cropland	WBP	WRP	EWP	CRP Cropland	GRP
98.82	98.82	98.82	0.0	0.0	0.0	0.0	0.0
State Conservation	Other Conservation	Effective DCP Cropland	Double Cropped	MPL/FWP			
0.0	0.0	98.82	0.0	0.0			

Crop	Base Acreage	PLC Yield	CCC-505 CRP Reduction
WHEAT	0.6	48	0.00
CORN	93.5	170	0.00

Illinois
Stephenson

U.S. Department of Agriculture
Farm Service Agency

FARM: 6645
Prepared: 7/11/22 8:20 AM
Crop Year: 2022
Page: 2 of 2

Report ID: FSA-156EZ

Abbreviated 156 Farm Record

DISCLAIMER: This is data extracted from the web farm database. Because of potential messaging failures in MIDAS, this data is not guaranteed to be an accurate and complete representation of data contained in the MIDAS system, which is the system of record for Farm Records.

Crop	Base Acreage	PLC Yield	CCC-505 CRP Reduction
SOYBEANS	3.1	52	0.00
Total Base Acres:	97.2		

Owners: CITIZENS STATE BANK LAND TRUST 40-044

Other Producers:

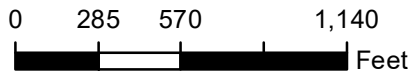


Common Land Unit

- Non-Cropland
- Cropland
- plss_a_il_WMAS
- CRP

Wetland Determination Identifiers

- Restricted Use
- Limited Restrictions
- Exempt from Conservation
- Compliance Provisions



2022 Program Year
Map Created December 13, 2021

Farm 6645
Tract 5289

Tract Cropland Total: 98.82 acres

IL177_T5289

United States Department of Agriculture (USDA) Farm Service Agency (FSA) maps are for FSA Program administration only. This map does not represent a legal survey or reflect actual ownership; rather it depicts the information provided directly from the producer and/or National Agricultural Imagery Program (NAIP) imagery. The producer accepts the data 'as is' and assumes all risks associated with its use. USDA-FSA assumes no responsibility for actual or consequential damage incurred as a result of any user's reliance on this data outside FSA Programs. Wetland identifiers do not represent the size, shape, or specific determination of the area. Refer to your original determination (CPA-026 and attached maps) for exact boundaries and determinations or contact USDA Natural Resources Conservation Service (NRCS).

Illinois
Stephenson

U.S. Department of Agriculture
Farm Service Agency

FARM: 6993
Prepared: 7/11/22 8:20 AM
Crop Year: 2022
Page: 1 of 2

Report ID: FSA-156EZ

Abbreviated 156 Farm Record

DISCLAIMER: This is data extracted from the web farm database. Because of potential messaging failures in MIDAS, this data is not guaranteed to be an accurate and complete representation of data contained in the MIDAS system, which is the system of record for Farm Records.

Operator Name Farm Identifier Recon Number
Not Applicable 2008 - 99

Farms Associated with Operator:

ARC/PLC G/F Eligibility: Eligible

CRP Contract Number(s): None

Farmland	Cropland	DCP Cropland	WBP	WRP	EWP	CRP Cropland	GRP	Farm Status	Number of Tracts
123.38	123.38	123.38	0.0	0.0	0.0	0.0	0.0	Active	1
State Conservation	Other Conservation	Effective DCP Cropland	Double Cropped	MPL/FPW					
0.0	0.0	123.38	0.0	0.0					

ARC/PLC						
PLC	ARC-CO	ARC-IC	PLC-Default	ARC-CO-Default	ARC-IC-Default	
CORN	SOYBN	NONE	NONE	NONE	NONE	

Crop	Base Acreage	PLC Yield	CCC-505 CRP Reduction	HIP
CORN	80.0	159	0.00	
SOYBEANS	10.1	49	0.00	0
Total Base Acres:	90.1			

Tract Number: 5511 Description P9 SEC 1 RIDOTT T26NR9E
FSA Physical Location : Stephenson, IL ANSI Physical Location: Stephenson, IL

BIA Range Unit Number:

HEL Status: HEL: conservation system is being actively applied Recon Number 2008 - 98
Wetland Status: Wetland determinations not complete

WL Violations: None

Farmland	Cropland	DCP Cropland	WBP	WRP	EWP	CRP Cropland	GRP
123.38	123.38	123.38	0.0	0.0	0.0	0.0	0.0
State Conservation	Other Conservation	Effective DCP Cropland	Double Cropped	MPL/FPW			
0.0	0.0	123.38	0.0	0.0			

Crop	Base Acreage	PLC Yield	CCC-505 CRP Reduction
CORN	80.0	159	0.00
SOYBEANS	10.1	49	0.00
Total Base Acres:	90.1		

Owners: C JAMES POWELL IRA STERLING TRUST

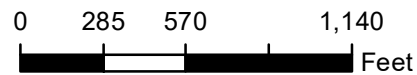


Common Land Unit

- Non-Cropland
- Cropland
- plss_a_il_WMAS
- CRP

Wetland Determination Identifiers

- Restricted Use
- Limited Restrictions
- Exempt from Conservation
- Compliance Provisions



2022 Program Year
Map Created December 13, 2021

Farm **6993**
Tract **5511**

Tract Cropland Total: 123.38 acres

IL177_T5511

United States Department of Agriculture (USDA) Farm Service Agency (FSA) maps are for FSA Program administration only. This map does not represent a legal survey or reflect actual ownership; rather it depicts the information provided directly from the producer and/or National Agricultural Imagery Program (NAIP) imagery. The producer accepts the data 'as is' and assumes all risks associated with its use. USDA-FSA assumes no responsibility for actual or consequential damage incurred as a result of any user's reliance on this data outside FSA Programs. Wetland identifiers do not represent the size, shape, or specific determination of the area. Refer to your original determination (CPA-026 and attached maps) for exact boundaries and determinations or contact USDA Natural Resources Conservation Service (NRCS).