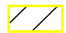

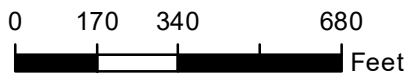


Common Land Unit



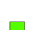

-  Non-Cropland
-  Cropland

Tract Boundary
plss_a_il



2022 Program Year
Map Created November 18, 2021

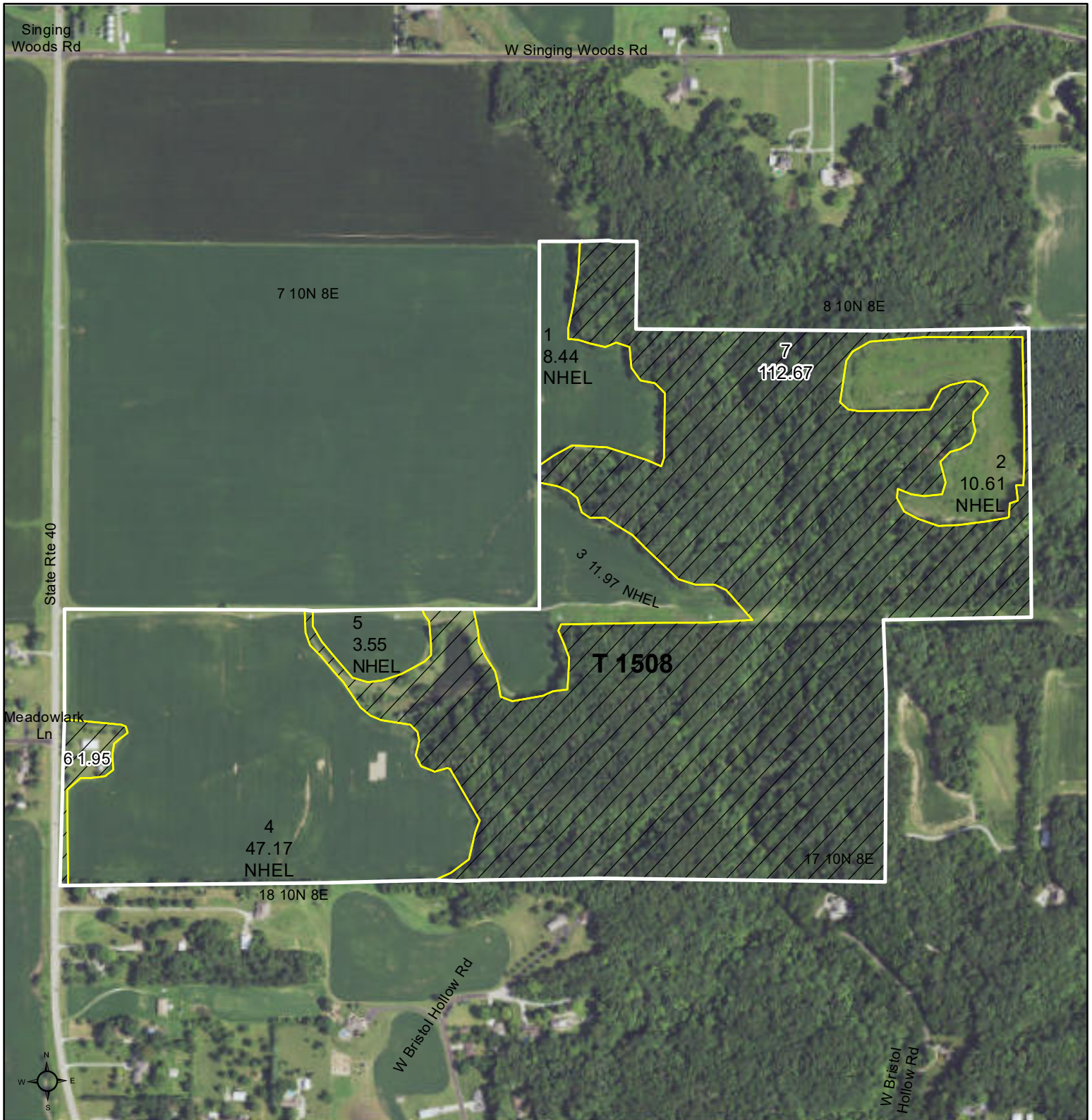
Wetland Determination Identifiers

-  Restricted Use
-  Limited Restrictions
-  Exempt from Conservation
-  Compliance Provisions

Tract Cropland Total: 46.14 acres

Farm **6527**
Tract **1582**

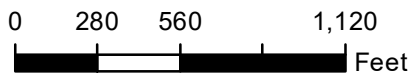
United States Department of Agriculture (USDA) Farm Service Agency (FSA) maps are for FSA Program administration only. This map does not represent a legal survey or reflect actual ownership; rather it depicts the information provided directly from the producer and/or National Agricultural Imagery Program (NAIP) imagery. The producer accepts the data 'as is' and assumes all risks associated with its use. USDA-FSA assumes no responsibility for actual or consequential damage incurred as a result of any user's reliance on this data outside FSA Programs. Wetland identifiers do not represent the size, shape, or specific determination of the area. Refer to your original determination (CPA-026 and attached maps) for exact boundaries and determinations or contact USDA Natural Resources Conservation Service (NRCS).



Common Land Unit

- Non-Cropland
- Cropland

Tract Boundary
plss_a_il



2022 Program Year
Map Created November 18, 2021

Wetland Determination Identifiers

- Restricted Use
- Limited Restrictions
- Exempt from Conservation
- Compliance Provisions

Tract Cropland Total: 81.74 acres

Farm **6527**
Tract **1508**

United States Department of Agriculture (USDA) Farm Service Agency (FSA) maps are for FSA Program administration only. This map does not represent a legal survey or reflect actual ownership; rather it depicts the information provided directly from the producer and/or National Agricultural Imagery Program (NAIP) imagery. The producer accepts the data 'as is' and assumes all risks associated with its use. USDA-FSA assumes no responsibility for actual or consequential damage incurred as a result of any user's reliance on this data outside FSA Programs. Wetland identifiers do not represent the size, shape, or specific determination of the area. Refer to your original determination (CPA-026 and attached maps) for exact boundaries and determinations or contact USDA Natural Resources Conservation Service (NRCS).

Illinois
 Peoria
 Report ID: FSA-156EZ

U.S. Department of Agriculture
 Farm Service Agency
Abbreviated 156 Farm Record

FARM: 6527
 Prepared: 1/4/22 7:51 AM
 Crop Year: 2022
 Page: 1 of 2

DISCLAIMER: This is data extracted from the web farm database. Because of potential messaging failures in MIDAS, this data is not guaranteed to be an accurate and complete representation of data contained in the MIDAS system, which is the system of record for Farm Records.

Recon Number
 2010 - 28

ARC/PLC G//F Eligibility: Eligible

CRP Contract Number(s): None

Farmland	Cropland	DCP Cropland	WBP	WRP	EWP	CRP Cropland	GRP	Farm Status	Number of Tracts
249.19	127.88	127.88	0.0	0.0	0.0	0.0	0.0	Active	2
State Conservation	Other Conservation	Effective DCP Cropland	Double Cropped	MPL/FWP					
0.0	0.0	127.88	0.0	0.0					

ARC/PLC						
PLC	ARC-CO	ARC-IC	PLC-Default	ARC-CO-Default	ARC-IC-Default	
CORN	SOYBN	NONE	NONE	NONE	NONE	

Crop	Base Acreage	PLC Yield	CCC-505 CRP Reduction	HIP
CORN	62.0	188	0.00	
SOYBEANS	53.9	49	0.00	0
Total Base Acres:	115.9			

Tract Number: 1508 Description N-5-1 1A Sec 7 Medina wp
 FSA Physical Location : Peoria, IL ANSI Physical Location: Peoria, IL
 BIA Range Unit Number:
 HEL Status: HEL Determinations not complete
 Wetland Status: Wetland determinations not complete
 WL Violations: None

Farmland	Cropland	DCP Cropland	WBP	WRP	EWP	CRP Cropland	GRP
196.36	81.74	81.74	0.0	0.0	0.0	0.0	0.0
State Conservation	Other Conservation	Effective DCP Cropland	Double Cropped	MPL/FWP			
0.0	0.0	81.74	0.0	0.0			

Crop	Base Acreage	PLC Yield	CCC-505 CRP Reduction
CORN	39.5	188	0.00
SOYBEANS	30.3	49	0.00
Total Base Acres:	69.8		

Owners: CHINUGE FAMILY LAND RUS

Illinois
Peoria

U.S. Department of Agriculture
Farm Service Agency

FARM: 6527
Prepared: 1/4/22 7:51 AM
Crop Year: 2022
Page: 2 of 2

Report ID: FSA-156EZ

Abbreviated 156 Farm Record

DISCLAIMER: This is data extracted from the web farm database. Because of potential messaging failures in MIDAS, this data is not guaranteed to be an accurate and complete representation of data contained in the MIDAS system, which is the system of record for Farm Records.

Other Producers: None

Tract Number: 1582 Description N-4-4 1B Sec 7 Medina Twp

FSA Physical Location : Peoria, L ANSI Physical Location: Peoria, L

BIA Range Unit Number:

HEL Status: NHEL: no agricultural commodity planted on undetermined fields

Wetland Status: Wetland determinations not complete

WL Violations: None

Farmland	Cropland	DCP Cropland	WBP	WRP	EWP	CRP Cropland	GRP
52.83	46.14	46.14	0.0	0.0	0.0	0.0	0.0
State Conservation	Other Conservation	Effective DCP Cropland	Double Cropped	MPL/FWP			
0.0	0.0	46.14	0.0	0.0			

Crop	Base Acreage	PLC Yield	CCC-505 CRP Reduction
CORN	22.5	188	0.00
SOYBEANS	23.6	49	0.00
Total Base Acres:	46.1		

Owners: CH NUGE FAM LY LAND TRUST

Other Producers: None

Producer Farm Data Report

Date: 1/4/22 7:46 AM

Crop Year: 2022

Page: 1

DISCLAIMER: This is data extracted from the web farm database. Because of potential messaging failures in MIDAS, this data is not guaranteed to be an accurate and complete representation of data contained the MIDAS system, which is the system of record for Farm Records.

Recording County Office Name

Peoria, Illinois

Number of Farms	Number of Tracts	Farmland	Cropland	DCP Cropland	CRP Cropland	Eff DCP Cropland
1	2	249.19	127.88	127.88	0.0	127.88

State & County	Farm	Tract	Relationship to Farm Tract	Producer	Farmland	Cropland	DCP Cropland	CRP Cropland	Eff DCP Cropland	HEL Code	Wetland Code
Peoria, IL	6527		Operator	WELLER, WILLIAM E							
		1508	Owner	CHINUGE FAMILY LAND TRUST	196.36	81.74	81.74	0.0	81.74	DNC	DNC
		1582	Owner	CHINUGE FAMILY LAND TRUST	52.83	46.14	46.14	0.0	46.14	N	DNC