



TIMED ONLINE • NO-RESERVE EQUIPMENT AUCTION



BIDDING CLOSES: TUES., DECEMBER 14TH | STARTING AT 3 P.M. ET

ITEMS ARE LOCATED AT THE FARM: 16777 SOUTH 480 W, REMINGTON, IN 47477
(APPROXIMATELY 32 MILES NORTHWEST OF LAFAYETTE, INDIANA)

**EQUIPMENT QUESTIONS:
QUENTIN
(219) 261-3444**



TRACTORS

- **2019 John Deere 9570R 4wd tractor**, PS trans., 5 hyd. outlets, 59 gpm hyd. pump, Michelin IF800/70R38 tires w/duals, HydraCushion suspension, wheel weights, front & rear suitcase weights, premium lights, CommandView III cab w/leather, 10" display, AutoTrac, DataSync, Section Control & Tractor/Implement Automation activations, 1,454 hours, SN 1RW9570RPJP061233
- **2020 John Deere 8R 340 MFWD tractor**, IVT trans., ILS front suspension, 5 hyd. outlets (one high flow), 85 gpm hyd. pump, 1000 PTO, VF480/80R50 rear tires w/duals, VF420/85R34 front tires w/duals, Michelin tires, front & rear weights, front & rear fenders, Intelligent Power Management, premium cab, 10" display w/AutoTrac, DataSync, In-Field Data Sharing, RowSense, Section Control & Tractor/Implement Automation activations, integrated StarFire 6000 receiver (RTK), 712 hours, SN 1RW8340DCLC172697 - extended powertrain warranty through Jan. 2025 or 1,500 hours
- **2017 John Deere 8370R MFWD tractor**, IVT trans., ILS front suspension, 6 hyd. outlets, 85 gpm hyd. pump, 1000 PTO, 480/80R50 rear tires w/duals, 420/85R34 front tires w/duals, Firestone tires, front & rear weights, front & rear fenders, premium LED lights, premium cab, cab suspension, 10" display w/AutoTrac, Turn Automation, DataSync, Implement Guidance, In-Field Data Sharing, Machine Sync, RowSense, Section Control & Tractor/Implement Automation activations, 1,896 hours, SN 1RW8370RTHD121040
- **2018 John Deere 8320R MFWD tractor**, IVT trans., ILS front suspension, 6 hyd. outlets, 85 gpm hyd. pump, 1000 PTO, 480/80R50 rear tires w/duals, 380/80R38 front tires w/duals, Michelin tires, front & rear weights, front & rear fenders, premium LED lights, premium cab w/leather, cab suspension, 10" display w/AutoTrac, Turn Automation, DataSync, Implement Guidance, In-Field Data Sharing, Machine Sync, RowSense & Section Control activations, 1,949 hours, SN 1RW8320RAJD135019
- **2018 John Deere 8245R MFWD tractor**, PS trans., 4 hyd. outlets, 60 gpm hyd. pump, 1000 PTO, 480/80R46 rear tires w/duals, 420/90R30 front tires, 1300 front axle, Firestone tires, front weights, front & rear fenders, premium LED lights, premium cab, 10" display, AutoTrac & Tractor/Implement Automation activations, 905 hours, SN 1RW8245RTHP130359 - extended powertrain warranty through May 2022 or 2,000 hours
- **2017 John Deere 8245R MFWD tractor**, PS trans., 5 hyd. outlets, 60 gpm hyd. pump, 540/1000 PTO capable, 480/80R46 rear tires w/duals, 420/90R30 front tires, 1300 front axle, Firestone tires, front weights, front & rear fenders, premium LED lights, premium cab, 10" display, AutoTrac activation, 2,029 hours, SN 1RW8245RLGP113523
- **2016 John Deere 8245R MFWD tractor**, PS trans., 5 hyd. outlets, 85 gpm hyd. pump, 480/80R46 rear tires w/duals, 420/90R30 front tires, 1300 front axle, front & rear weights, front & rear fenders, premium LED lights, premium cab, 10" display, AutoTrac activation, 2,352 hours, SN 1RW8245RTGP113270
- **2014 John Deere 4052R MFWD compact tractor**, open station w/folding ROPS, eHydro trans., rear hyd. outlet, 540 PTO, 16.9-24 rear tires, 8-16 front tires, sells complete w/JD H180 loader, material bucket, joystick, grill guard, iMatch quick hitch, 976 hours, SN 1LV4052RTEH110099

COMBINE & HEADS

- **2020 John Deere S780 4wd combine**, ProDrive trans., ContourMaster feed-house w/CommandTouch 5 spd. drive & hyd. fore/aft, PowerFold bin extension, chopper w/PowerCast tailboard, 28.5' unload auger, extended wear rotor, extended wear grain handling, 650/85R38 drive tires w/duals, VF750/65R26 steer tires, Michelin tires, Active Yield, LED lights, premium cab w/leather, 451 eng./322 sep. hours, SN 1H0S780SVLT811144 - extended warranty through July 2023 or 1,500 hours
- **2019 John Deere 745FD 45' flex draper head**, flip-over reel, dual knife drive, SN 1H0745FDKK0805202
- **2017 John Deere 612C 12 row 30" corn head**, hyd. deck plates, intermeshing knife rolls, RowSense sensors, height sensors, SN 1H0745FDKK0805202

CONSTRUCTION EQUIPMENT

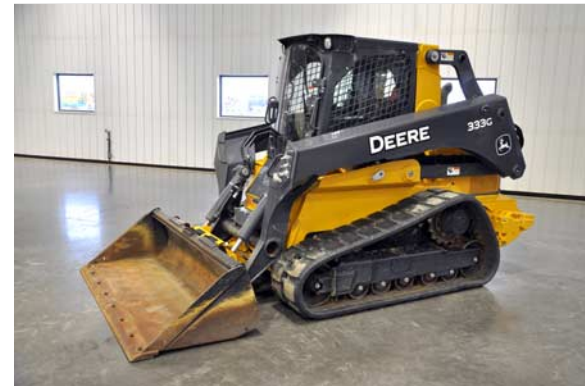
- **2016 John Deere 333G compact track loader**, fully equipped cab, elec. hand controls (ISO or H), high flow auxiliary hyd., QuickTach coupler, 18" tracks, weights, 84" HD bucket, 322 hours, SN 1T0333GMPGF301287 - extended warranty (powertrain & hydraulics) through Dec. 2023 or 2,000 hours
- **Case 580 Super M 4wd backhoe**, EROPS, Extend-A-hoe, Ride Control, 19.5L-24 rear tires, outriggers, 2,497 hours, SN JJG0281676
- **1993 Lull 644 telehandler**, telescoping boom, open station, 13.00-24 tires, 3,542 hours, SN B5U4D11-3077

PLANTER & VERTICAL TILLAGE TOOL

- **2017 Landoll 7450 44' VT Plus vertical tillage tool**, hyd. adjust rolling basket, 5-section frame, HD transport tires, gauge wheels, SN 74A1705515
- **2005 Kinze 3600 16/32 planter**, ground drive, HD spring downforce, no-till coulters, seed firmers, box extensions, markers, SN 618996
- **Mainframe axle off JD DB60 planter w/truck tires**

JOHN DEERE AMS EQUIPMENT

- (3) John Deere StarFire 6000 RTK receivers, 450 mhz radios
- (2) John Deere StarFire 6000 SF1 receivers



AUCTIONEERS' NOTE: Make plans to participate in this outstanding equipment auction! This is a timed online auction - please visit our website at www.SullivanAuctioneers.com for details, photos & internet bidding catalog. There is no internet buyer's premium. A loader & operator will be available following the auction. Not responsible for accidents, errors or omissions. **AUCTION MANAGERS:** Matt Sullivan (309) 221-7001 & Luke Sullivan (309) 371-5214.

