

Space for Recorder

Plat of Survey

Tract 1

See sheet 2 for sketch

See sheet 3 for description

Note: This tract is part of a 13 tract survey.
The remaining tracts are included on
their own separate plats

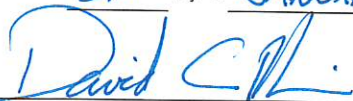
Note:

The property described in this survey is part of Parcels
06-0-01272-001 & 11-0-00081-000 as identified by the
Assessor of Coles County.

Surveyor notes:

1. Field work completed on January 27, 2022
2. No subsurface exploration was made.
3. No search was made for easements, vacations or dedications.
4. Bearings based on Illinois State Plane Coordinates, East Zone (NAD83) as determined by GPS Observation.
5. This plat is a true representation of a survey completed by me or under my direction.
6. This service conforms to the current Illinois Minimum Standards of Practice applicable to Boundary Surveys.

Dated this 27TH day of JANUARY 20 22



David C. Rankin
Illinois Professional Land Surveyor No. 3355
License Expires 11-30-2022



Survey Completed at the request of:
Sullivan Auctioneers

Part of the E 1/2, SW 1/4, &
Part of the W 1/2, W 1/2, SE 1/4
Section 34, T12N, R8E, 3rd
P.M., Coles County, Illinois

AND

Part of the NE 1/4, NW 1/4, &
Part of the NW 1/4, NE 1/4,
Section 3, T11N, R8E, 3rd
P.M., Coles County, Illinois

RANKIN LAND SURVEYING

2412 Prairie Avenue - Mattoon, IL 61938 - 217.460.0825
Illinois Professional Design Firm No. 184.007891-0008

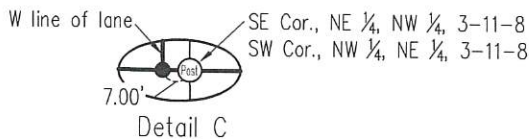
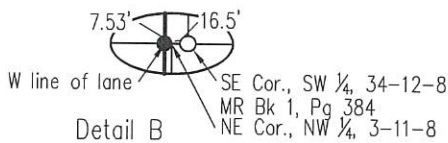
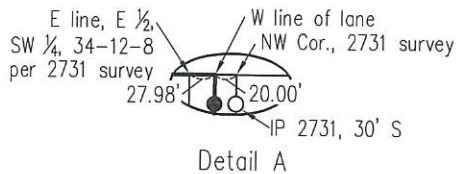
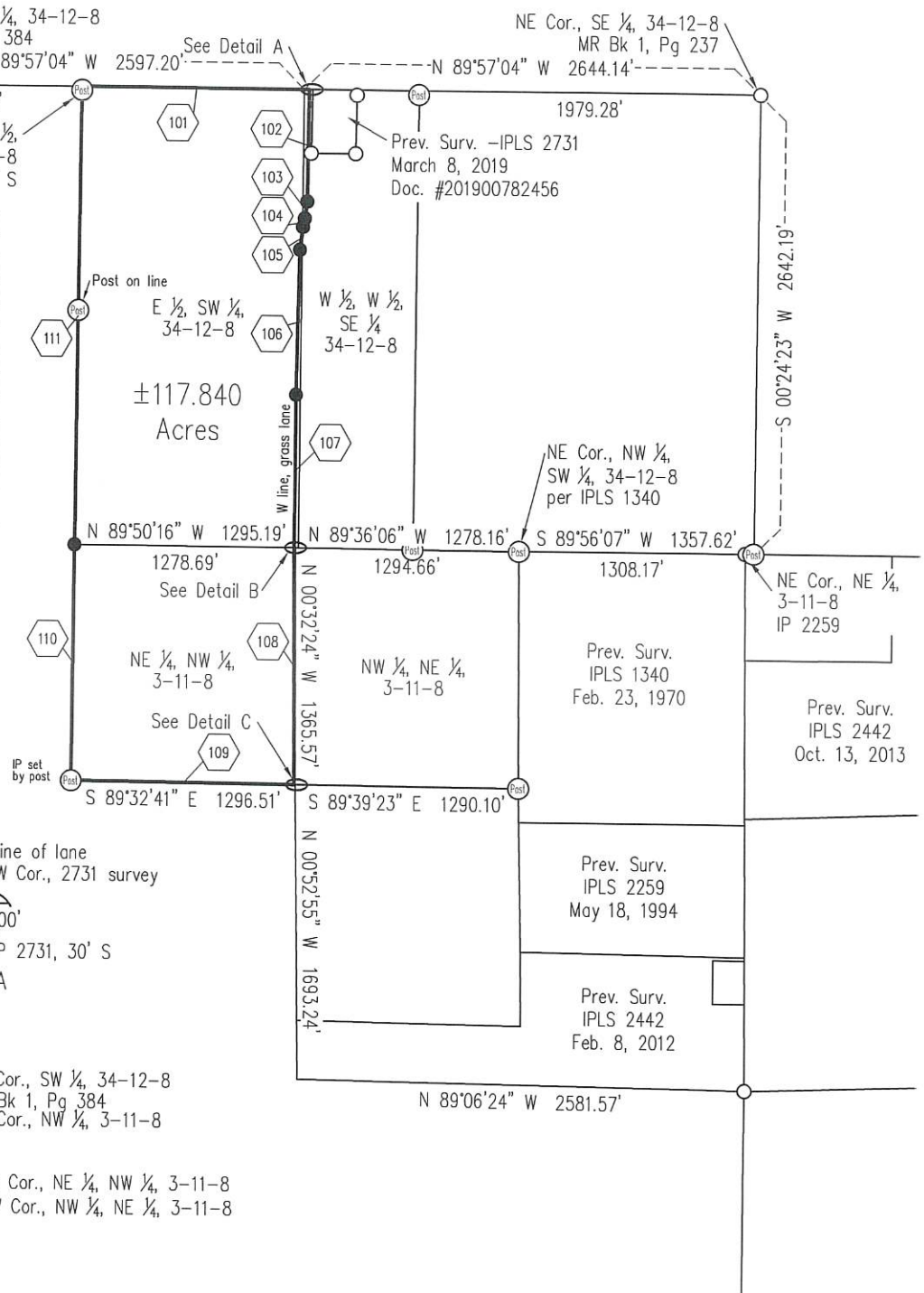
RLS File No. 151501022-1
Sheet 1 of 3

Plat of Survey



Scale 1" = 1000'

LINE	BEARING	DISTANCE
101	S 89°57'04" E	1317.99'
102	S 00°24'04" W	644.16'
103	S 07°35'11" W	97.67'
104	S 12°32'19" W	49.89'
105	S 06°49'47" W	131.79'
106	S 01°04'34" W	835.55'
107	S 00°10'46" W	880.98'
108	S 00°33'44" E	1365.63'
109	N 89°32'41" W	1289.50'
110	N 00°12'25" E	1358.88'
111	N 00°20'15" E	2634.51'



Legend

- Survey Marker Found
- Iron Pin set W/IPLS cap #3355
- Boundary of Property Surveyed

RANKIN LAND SURVEYING

2412 Prairie Avenue - Mattoon, IL 61938 - 217.460.0825
 Illinois Professional Design Firm No. 184.007891-0008

Survey Completed at the request of:

Sullivan Auctioneers

RLS File No. 151501022-1
 Sheet 2 of 3

Plat of Survey

Description of Property Surveyed

Part of the East Half (E ½) of the Southwest Quarter (SW ¼) and part of the West Half (W ½) of the West Half (W ½) of the Southeast Quarter (SE ¼) of Section Thirty-four (34), Township Twelve (12) North, Range Eight (8) East of the Third Principal Meridian AND part of the Northeast Quarter (NE ¼) of the Northwest Quarter (NW ¼) and part of the Northwest Quarter (NW ¼) of the Northeast Quarter (NE ¼) of Section Three (3), Township Eleven (11) North, Range Eight (8) East of the Third Principal Meridian being more particularly described as follows:

Beginning at the Northwest Corner of the East Half (E ½) of the Southwest Quarter (SW ¼) of Section Thirty-four (34), Township Twelve (12) North, Range Eight (8) East of the Third Principal Meridian;
thence South 89 degrees 57 minutes 04 seconds East along the north line of said East Half (E ½) a distance of 1317.99 feet;

thence South 00 degrees 24 minutes 04 seconds West a distance of 644.16 feet;

thence South 07 degrees 35 minutes 11 seconds West a distance of 97.67 feet;

thence South 12 degrees 32 minutes 19 seconds West a distance of 49.89 feet;

thence South 06 degrees 49 minutes 47 seconds West a distance of 131.79 feet;

thence South 01 degree 04 minutes 34 seconds West a distance of 835.55 feet;

thence South 00 degrees 10 minutes 46 seconds West a distance of 880.98 feet;

thence South 00 degrees 33 minutes 44 seconds East a distance of 1365.63 feet to the south line of the Northeast Quarter (NE ¼) of the Northwest Quarter (NW ¼) of Section Three (3), Township Eleven (11) North, Range Eight (8) East of the Third Principal Meridian;

thence North 89 degrees 32 minutes 41 seconds West along said south line a distance of 1289.50 feet to the Southwest Corner of said quarter-quarter;

thence North 00 degrees 12 minutes 25 seconds East a distance of 1358.88 feet to the Northwest Quarter (NW ¼) of said quarter-quarter;

thence North 00 degrees 20 minutes 15 seconds East a distance of 2634.51 feet to the point of beginning, situated in Coles County, Illinois and containing 117.840 acres more or less.

Survey Completed at the request of:

Sullivan Auctioneers

RANKIN LAND SURVEYING

2412 Prairie Avenue - Mattoon, IL 61938 - 217.460.0825
Illinois Professional Design Firm No. 184.007891-0008

RLS File No. 151501022-1
Sheet 3 of 3